

TBQC TBQM

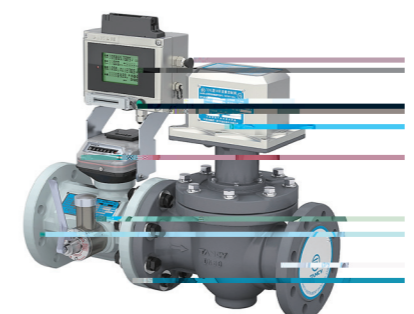
	(mm/inch)	(m ³ /h)	Q _{max} (kPa)		MPa	s		
TBQC-50A TBQM-G40/FCC	50 2"	6 65	1.3	0.5	0.6(0.8))	120		
TBQC-50B TBQM-G65/FCC		10 100	1.2	0.8				
TBQC-80A TBQM-G100/FCC	80 3"	8 160	0.6	0.8				
TBQC-80B TBQM-G160/FCC		13 250	0.8	1.2				
TBQC-80C TBQM-G250/FCC		20 400	1.4	2.2				
TBQC-100A TBQM-G160/FCC	100 4"	13 250	0.6	0.3		0.40	400	
TBQC-100B TBQM-G250/FCC		20 400	0.8	0.7				
TBQC-100C TBQM-G400/FCC		32 650	1.6	1.9				
TBQC-150A TBQM-G400/FCC	150 6"	32 650	0.6	0.6			0.40	480
TBQC-150B TBQM-G650/FCC		50 1000	0.7	1.0				
TBQC-150C TBQM-G1000/FCC		80 1600	1.7	1.7				
TBQC-200A TBQM-G650/FCC	200 8"	50 1000	0.3	0.3		0.40		600
TBQC-200B TBQM-G1000/FCC		80 1600	0.6	0.6				
TBQC-200C TBQM-G1600/FCC		130 2500	1.5	1.5				
1.0 Q _{min} Q 20%Q _{max} : ± 2.0% 20%Q _{max} Q Q _{max} : ± 1.0%								



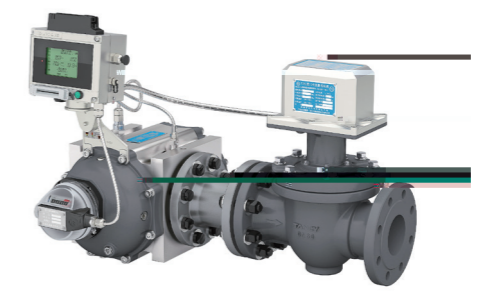
产品概述

主要优势

- △
 -
 -
 - ☑
 -
 -
 -
 - ☑
 -
 -
- m³
- CPU ESAM



TBQM/FCC



TYL/FCC



TEP

1. 1.6MPa
2. 1.2kg/m³
3. TBQC 1.0

天信仪表集团有限公司

A: 浙江省温州市苍南县工业园区花莲路 198 号
T: 0577-6885 6655

W: www.tancy.com
E: tancy@tancy.com



技术规格

TYL

	(mm/inch)	(m ³ /h)		(m ³ /h)	(m ³ /h)	Q _{max} (kPa)	(MPa.g)	(s)	
TYL-G10C TYL-G10/FCC	25 1"	16	40:1	0.03	0.02	0.08	0.6(0.8)	20	
TYL-G16C TYL-G16/FCC	50 2"	25	50:1	0.08	0.06	0.10		120	
TYL-G25C TYL-G25/FCC	50 2"	40	80:1	0.06	0.05	0.11			
TYL-G40C TYL-G40/FCC	50 2"	65	130:1	0.06	0.04	0.24			
TYL-G65C TYL-G65/FCC	50 2"	100	200:1	0.06	0.05	0.35			
TYL-G100C TYL-G100/FCC	80 3"	160	250:1	0.04	0.03	0.42			
TYL-G160-3"C TYL-G160-3"/FCC	80 3"	250	160:1	0.15	0.10	0.32			240
TYL-G160-4"C TYL-G160-4"/FCC	100 4"	250	160:1	0.15	0.10	0.28			
TYL-G250C TYL-G250/FCC	100 4"	400	200:1	0.10	0.06	0.45			400
TYL-G400-4"C TYL-G400-4"/FCC	100 4"	650	260:1	0.30	0.20	0.70			
TYL-G400-6"C TYL-G400-6"/FCC	150 6"	650	100:1	0.70	0.50	0.31	480		
TYL-G650C TYL-G650/FCC	150 6"	1000	160:1	0.80	0.60	0.47		0.40	
TYL-G1000C TYL-G1000/FCC	200 8"	1600	160:1	1.20	0.90	0.55			600
1.0 Q _{min} Q 5% Q _{max} : ± 2.0% 5% Q _{max} Q Q _{max} : ± 1.0%									

1. 1.6MPa
2. 1.2kg/m³

TEP

	(mm)	(m ³ /h)		Q _{max} (kPa)	(MPa.g)	(s)	(MPa.g)
TEP-G6	20	0.25 10	0.04	0.27	0.1	15	1.6
TEP-G6 ^b	20	0.4 10					
TEP-G10	25	0.4 16					
TEP-G16	32	0.5 25	0.08	0.30			
	40			0.19			
	50			0.15			
TEP-G25	40	0.5 40	0.06	0.22		20	
	50			0.19			
TEP-G40	40	0.5 65		0.43			
	50			0.35			
TEP-G65	50	0.5 100		0.51			
TEP-G100	80	0.65 160		0.04	0.49		
TEP-G160	80	1.6 250		0.15	0.44		50
	100				0.35		
TEP-G250	100	2.0 400			0.10		
TEP-G400	100	2.5 650			0.30		1.14

- 1.
2. 1.2kg/m³
3. TEP-G6 b